



# ASSEMBLY INSTRUCTIONS

RIKA-STOOL

**Remove all parts from carton, separate by part numbers indicated on parts list, and verify part quantities.**

**STEP1** Insert five Casters (2) into Base (1), push hard until you feel or hear the Caster snap into place.

**STEP2** Slide Pneumatic Cylinder (3) through Footring (11) and into Base (1).

**STEP3** Attach Arms (7L & 7R) to Seat Cushion (5) using four Arm Screws (8) for each arm. **FULLY TIGHTEN SCREWS USING 5MM ALLEN WRENCH (12).**

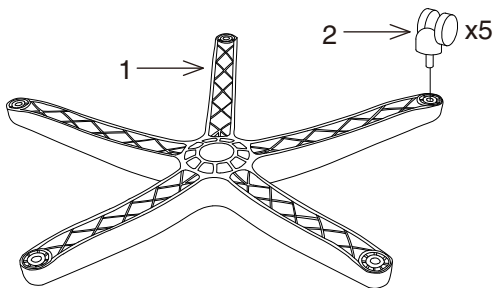
**STEP4** Attach Back Support (6) to the rear of Seat Plate (4), secure Back Support (6) using three Back Screws (10) and three Flat Washers (9). **FULLY TIGHTEN SCREWS USING 6MM ALLEN WRENCH (13).**

**STEP5** Place the assembled seat on top of Pneumatic Cylinder and apply downward pressure.

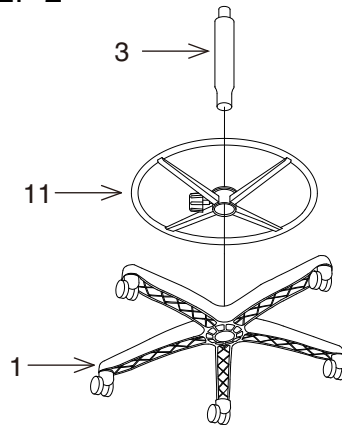
**ATTENTION: MAKE SURE ALL SCREWS ARE FULLY TIGHTENED BEFORE USING CHAIR. LUBRICATE ALL MOVING PARTS AND TIGHTEN ALL SCREWS EVERY 3 MONTHS.**

PARTS	QTY
1. Base.....	1
2. Casters.....	5
3. Pneumatic Cylinder.....	1
4. Seat Plate.....	1
5. Seat Cushion.....	1
6. Back Support.....	1
7. Arms (7L & 7R).....	2
8. Arm Screws (SHORT).....	8
9. Flat Washers.....	3
10. Back Screws (LONG).....	3
11. Footring.....	1
12. 5mm Allen Wrench.....	1
13. 6mm Allen Wrench.....	1

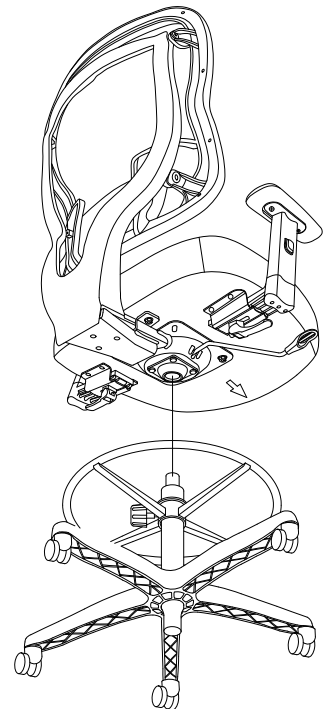
## STEP 1



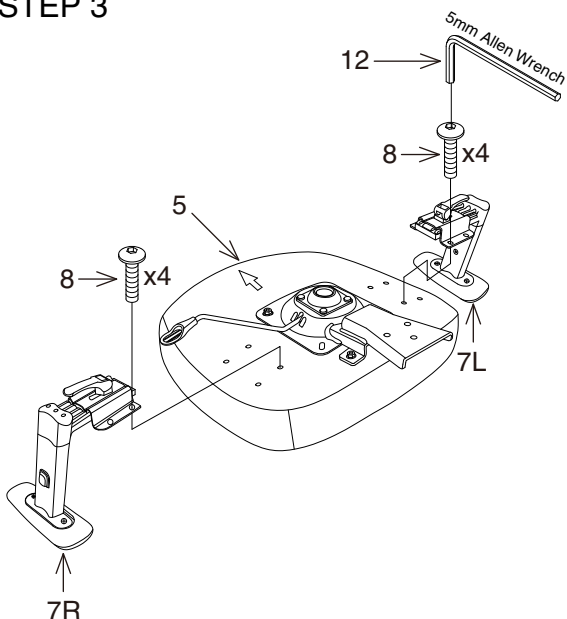
## STEP 2



## STEP 5



## STEP 3



## STEP 4

