

ASSEMBLY INSTRUCTIONS

MODEL#: RIK-B / RIK-BL / RIK-G / RIK-GL / RIK-RL
RIK-MF-BK-FAB / RIK-FABRIC

Remove all parts from carton, separate by part numbers indicated on parts list, and verify part quantities.

STEP1 Insert five Casters (2) into Base (1), push hard until you feel or hear the Caster snap into place.

STEP2 Attach Arms (7L & 7R) to Seat Cushion (5) using three Allen Head Screws (8) and three Flat Washers (10) for each arm. **FULLY TIGHTEN SCREWS USING ALLEN WRENCH (13).**

STEP3 Attach Seat Plate (4) to Seat Cushion (5) using two Seat Plate Screws (9), two Flat Washers (10) for the front and two Allen Head Screws (8) and two Flat Washers (10) for the rear. **FULLY TIGHTEN SCREWS USING ALLEN WRENCH (13).**

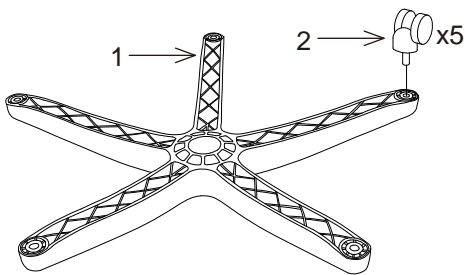
STEP4 Attach Back Assembly (6) to assembled seat by inserting Back Support (12) into rear of Seat Plate (4), secure Back Support (12) using three Back Screws (11). **FULLY TIGHTEN SCREWS USING ALLEN WRENCH (13).**

STEP5 Insert Pneumatic Cylinder (3) into Base (1), place assembled seat on top of Pneumatic Cylinder and apply downward pressure.

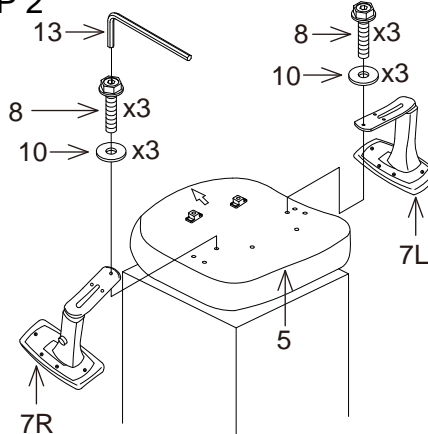
ATTENTION: MAKE SURE ALL SCREWS ARE FULLY TIGHTENED BEFORE USING CHAIR. LUBRICATE ALL MOVING PARTS AND TIGHTEN ALL SCREWS EVERY 3 MONTHS.

PARTS	QTY
1. Base.....	1
2. Casters.....	5
3. Pneumatic Cylinder.....	1
4. Seat Plate.....	1
5. Seat Cushion.....	1
6. Back Assembly.....	1
7. Arms (7L & 7R).....	2
8. Allen Head Screws.....	8
9. Seat Plate Screws (Front).....	2
10. Flat Washers.....	10
11. Back Screws.....	3
12. Back Support.....	1
13. Allen Wrench.....	1

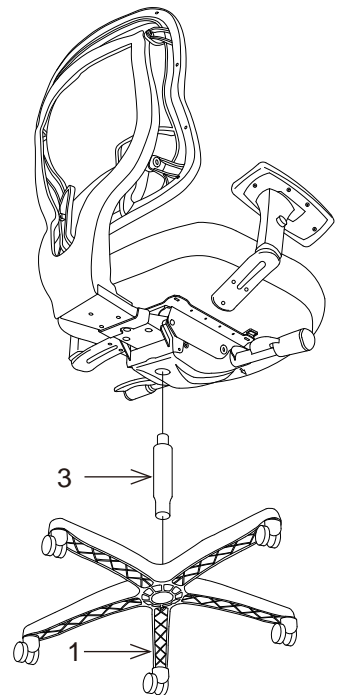
STEP 1



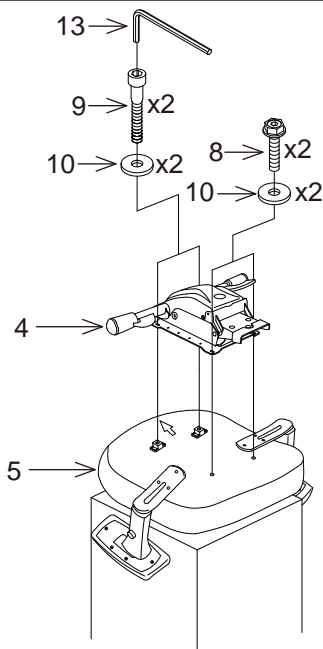
STEP 2



STEP 5



STEP 3



STEP 4

